

FISHWAY STATUS REPORT

Date: 4/4/2015
Inspection Period: 3/29 thru 4/4/2015

All JD Fishways are inspected twice per day during fish season, Mar. 1 - Nov. 30
 Frequent monitoring of the PLC displays in SMF Fisheries Office as necessary.



JOHN DAY DAM

JD/WC Project-Fisheries
 P.O. Box 823
 Rufus, Oregon 97050
 Phone: 541-506-7860

John Day Dam	Inspections	Criteria	Total Number of Inspections: 14	Temperature: 48 F
	Out of Criteria	Limit		Secchi: 6.0 Ft.
NORTH FISHWAY			5 out of 6 AWS pumps available since 12/23/14	
Exit differential	0	≤ 0.5'		
Exit Control weirs	0	High setting	High setting is normal for JDN	
Count station differential	0	≤ 0.3'		
Weir crest depth (DS gauge)	0	1.0' ± 0.1'		
Entrance differential	0	1.0' - 2.0'	AVG 1.5	
SOUTH FISHWAY			3 AWS Turbines in regular service since 2/28/15	
Exit differential	0	≤ 0.5'		
Exit Control weirs	0	Med Setting	Mid setting is normal for JDS	
Count station differential	0	≤ 0.3'		
Weir crest depth (US gauge)	0	1.0' ± 0.1'		
South entrance differential	0	1.0' - 2.0'	AVG 1.4	
Entrance weir SE1	0	depth (≥ 8')	AVG 8.5	
Collection channel velocity	0	1.5 - 4 fps	AVG 3.17	
N. Entrance PH(Bay 19)differential	0	1.0' - 2.0'	AVG 1.7	
Entrance weir NE1	0	depth (≥ 8')	AVG 9.0	
Entrance weir NE2	0	depth (≥ 8')	AVG 9.1	
JUVENILE PASSAGE			In regular service with all necessary STSs since 3/23	
Forebay/bypass conduit differential	0	4.0' - 5.0'	AVG 4.6	
Submersible traveling screens	0	visual inspect	All STSs installed by 3/26/15.	
Turbine trashrack drawdown	0	<1.5', wkly		
Vert barrier screen drawdown	0	<1.5', wkly		
Spill volume	OOS		On seal since 11/30	
Spill pattern	N/A	per FPP	2015 Spill season is starting on 4/10 at 0001 hrs	
Turbine Unit Priority	0	per FPP		
Turbine 1% Efficiency	0	per FPP		

SMOLT MONITORING FACILITY

Operation: SMF was watered up on 3/25 and then switched to sampling mode on 3/31 AM. First sample was processed by PSMFC on 4/1. JD Fisheries crew has started regular 24/7 swing shift schedule as required by FPP; it will continue this until the end of sampling season on 9/15.

Maintenance: All devices working well without any issues at this time

Research: N/A

None

Fallbacks: AVG: 53 MAX: 59 MIN: 43

OTHER ISSUES:**JOHN DAY**

BIRDS : see the Avian Numbers tab. We report all species and locations, but in reality only gulls in the tailrace BRZ are relevant at JD.

JD Tailrace BRZ Avian Grid will be missing two across river lines # 26 & 27; JD Engineering was unable to reinstall them due to contracting issues.

It is impossible to predict if gulls will penetrate the grid through this gap; JD Fisheries will monitor and report on an increased predation if any results.

JD Engineering preparing to issue an improved/ multi- year contract for the lines maintenance during the next winter outage, in February 2016.

Operations:

JBS RTS was on 3/23/15. STS were installed by JD Structural crew 3/23 - 3/26/15. JBS in regular service since 3/27.

JD North Fishway has been in service since 12/23; 5 out of 6 AWS pumps are available. Repair work on pump 4 continues; pump 3 has vibration issues and should be the last in service.

JD South Fishway RTS was on 2/28/15. All 3 AWS pumps in service and are working properly.

Maintenance:

JD North AWS pumps - five out of total six are available. Repair of AWS pump # 4 by a contractor started on 1/26 & is ongoing.

Gateway drawdown: 3/29/15 and 4/1/15 All gatewells were in criteria.

Calibration: 3/14/2015 All sensors were within the criteria of 0.3' .

Research:

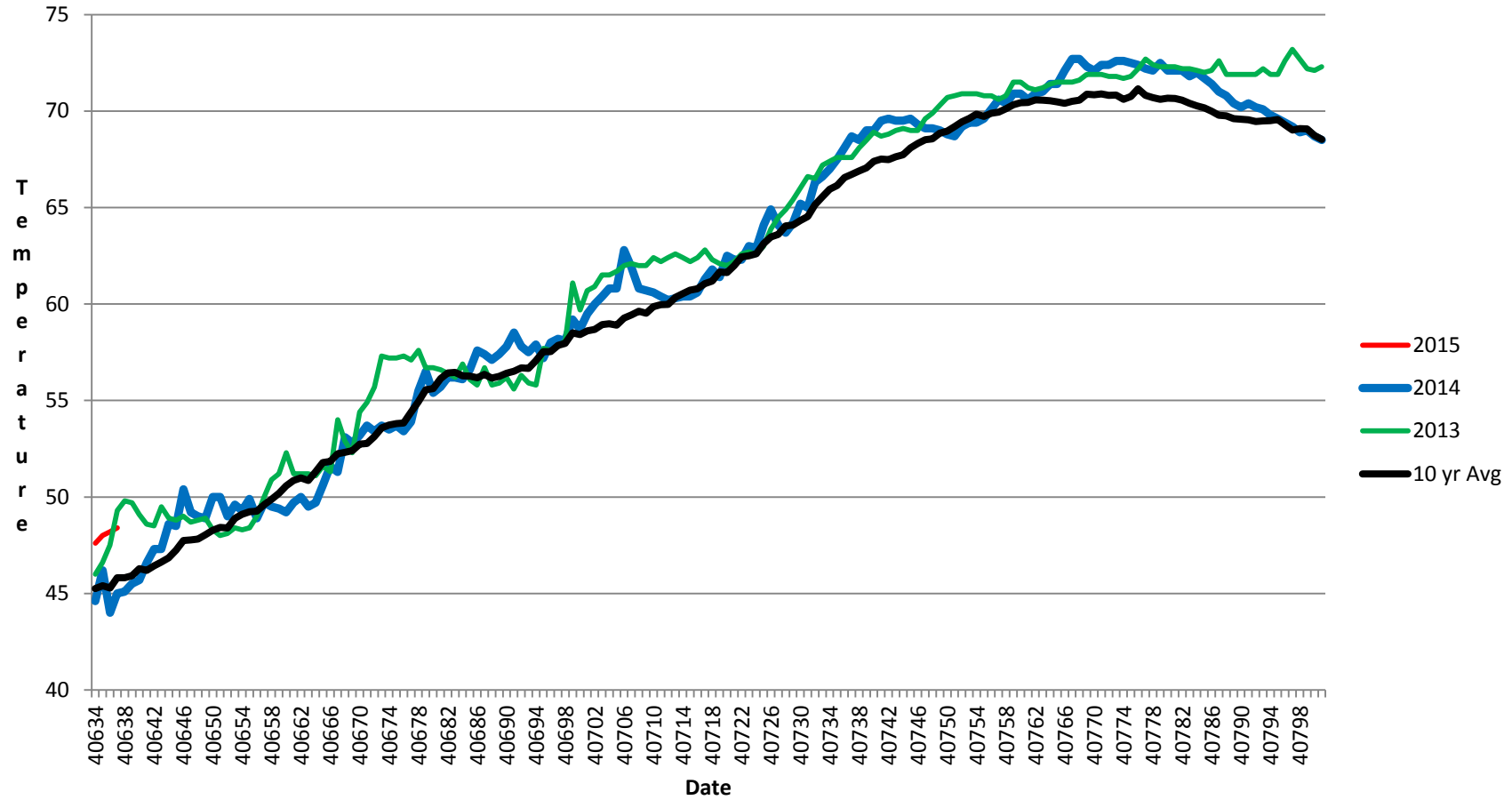
2015 Adult Fish Counting by Normandeau Associates will commence on 1 April, 2015. Security and safety coordination underway.

Adult Salmonids Radio telemetry evaluations are ongoing at both JD adult fishway. University of Idaho crew is in charge of detecting of all adult salmonids, which were tagged and released at Bonneville Dam.

Kevin Moynahan
OPM John Day/Willow Creek Project

Date: 7-Apr-15

JDA SMF Water Temp



JDA Collection Channel Velocity

Date 2-Apr-15

By: ML/EG

Bay(s)	Time	Sec.	Velocity (f/s)
0-2	1:10	70	2.57
2 - 4	2:08	128	3.10
4 - 6	3:10	190	2.90
6 - 8	4:05	245	3.27
8 - 10	5:02	302	3.16
10 - 12	5:57	357	3.27
12 - 14	7:02	422	2.77
14 - 16	8:01	481	3.05
16 - 18	8:42	522	4.39
			3.17

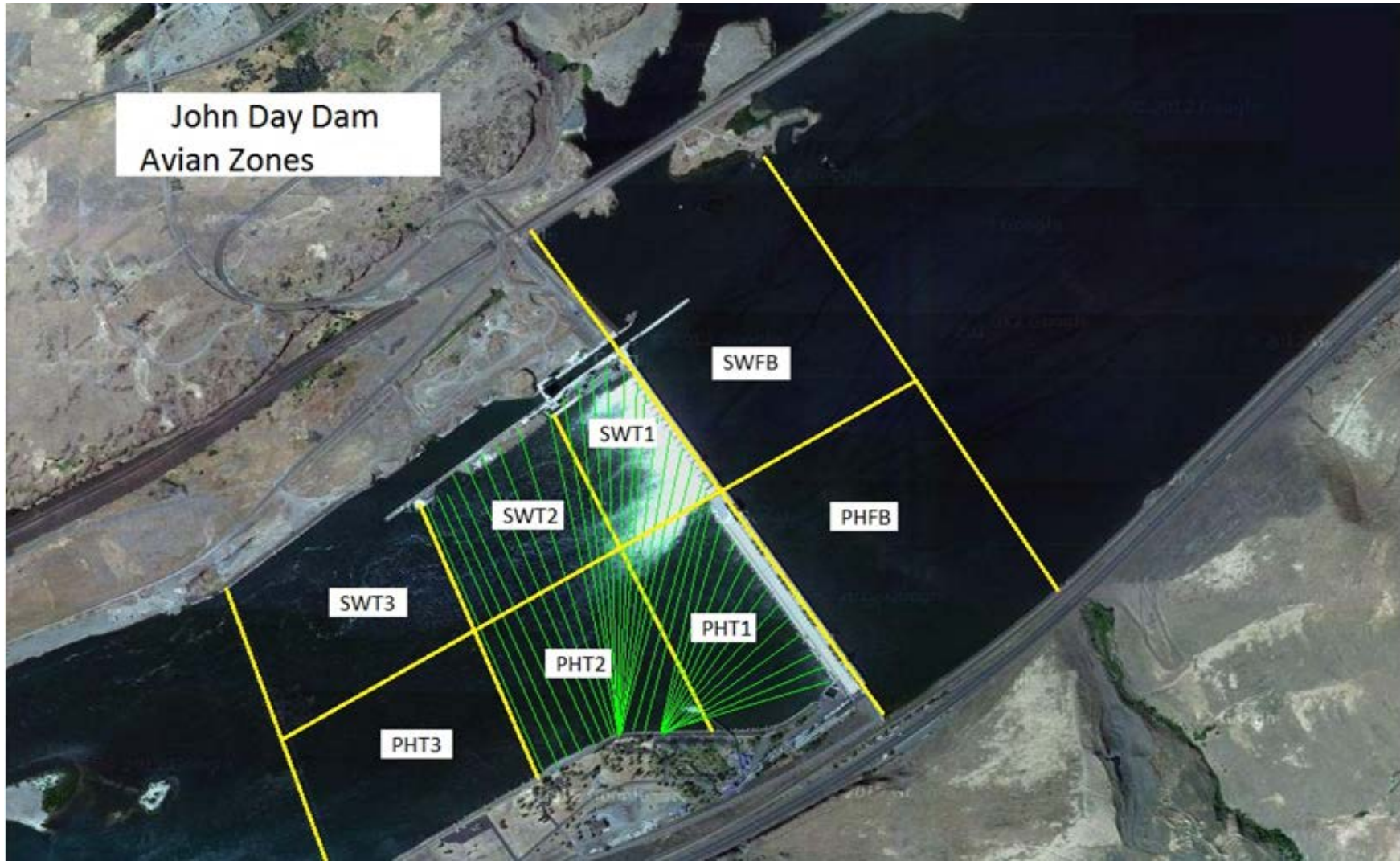
2015 JDA Piscivorous Bird Counts

(F=foraging, NF=non-foraging)

Avian Bird Counts for the Week of March 29th - April 4th

	Gull		Cormorant		Caspian tern		Pelican		Grebe		Total
	F	NF	F	NF	F	NF	F	NF	F	NF	
PHFB	0	1	4	4	0	0	0	0	64	15	88
SWFB	0	14	0	0	0	0	0	0	0	0	14
PH1	0	0	2	3	0	0	0	0	0	0	5
PH2	0	0	0	0	0	0	0	0	0	0	0
PH3	0	0	0	0	0	0	0	0	0	0	0
SW1	0	2	0	0	0	0	0	0	0	0	2
SW2	0	0	0	7	0	0	0	0	0	0	7
SW3	0	0	0	6	0	0	0	0	0	0	6
Total	0	17	6	20	0	0	0	0	64	15	122

John Day Dam
Avian Zones



John Day Weekly Averages

	Temp:	Secchi:	Fallbacks
Sun	47	6.0	
Mon	48	6.0	
Tues	48	6.0	43
Wed	48	6.0	53
Thur	48	6.0	54
Fri	48	6.0	54
Sat	48	6.0	59
AVG:	48	AVG: 6.0	AVG 53
			MAX 59
			MIN 43

	NE1	NE2	S.Ent	SE1	N.Ent	JBS Diff	Bay19
Sun	9.6	9.6	1.4	8.3	1.5	4.5	1.6
Sun	10.0	10.0	1.3	8.3	1.5	4.6	1.6
Mon	9.3	9.3	1.4	8.6	1.5	4.6	1.8
Mon	9.7	9.7	1.3	8.4	1.4	4.2	1.5
Tues	8.9	8.9	1.4	9.1	1.6	4.7	1.6
Tues	8.2	8.2	1.3	8.4	1.6	4.7	1.7
Wed	8.3	8.2	1.4	8.4	1.5	4.6	1.7
Wed	8.3	8.4	1.5	8.8	1.6	4.6	1.6
Thur	8.8	8.9	1.3	8.7	1.6	4.5	1.7
Thur	9.1	9.1	1.5	8.4	1.6	4.5	1.7
Fri	9.3	9.4	1.6	8.3	1.4	4.6	1.6
Fri	9.0	9.1	1.4	8.4	1.4	4.6	1.8
Sat	9.2	9.3	1.5	8.3	1.5	4.6	1.6
Sat	8.6	8.7	1.5	8.4	1.6	4.6	1.7
AVG:	9.0	9.1	1.4	8.5	1.5	4.6	1.7